

ROGER

SHE'S IN LOVE

BENNY

SHE'S GOT A NEW MAN

MARK

WELL—NO

BENNY

WHAT'S HIS NAME?

MARK & ROGER

JOANNE:

BENNY

Rent, my amigos, is due  
Or I will have to evict you  
Be there in a few<sup>6</sup>

(ROGER defiantly picks out "Musetta's" theme from La Bohème on the electric guitar.)

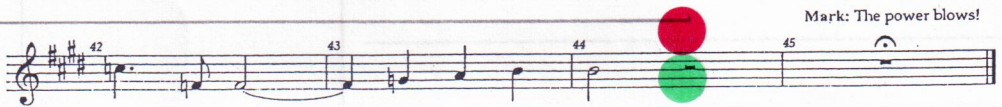


LX 13

LX 14

SO 8

FUSE



Mark: The power blows!

LX 15

The power blows<sup>10-15</sup>

MARK

(The COMPANY bursts into a flurry of movement and all but MARK & ROGER freeze in a group upstage)

LX 16

4 REPEATS + 2 3 4

#3 Rent

11

HOW DO YOU DOCUMENT REAL LIFE  
WHEN REAL LIFE'S GETTING MORE  
LIKE FICTION EACH DAY  
HEADLINES—BREAD-LINES  
BLOW MY MIND  
AND NOW THIS DEADLINE  
"EVICTIION—OR PAY"

RENT<sup>19</sup>

ROGER

24

HOW DO YOU WRITE A SONG  
WHEN THE CHORDS SOUND WRONG  
THOUGH THEY ONCE SOUNDED RIGHT AND RARE  
WHEN THE NOTES ARE SOUR  
WHERE IS THE POWER  
YOU ONCE HAD TO IGNITE THE AIR

